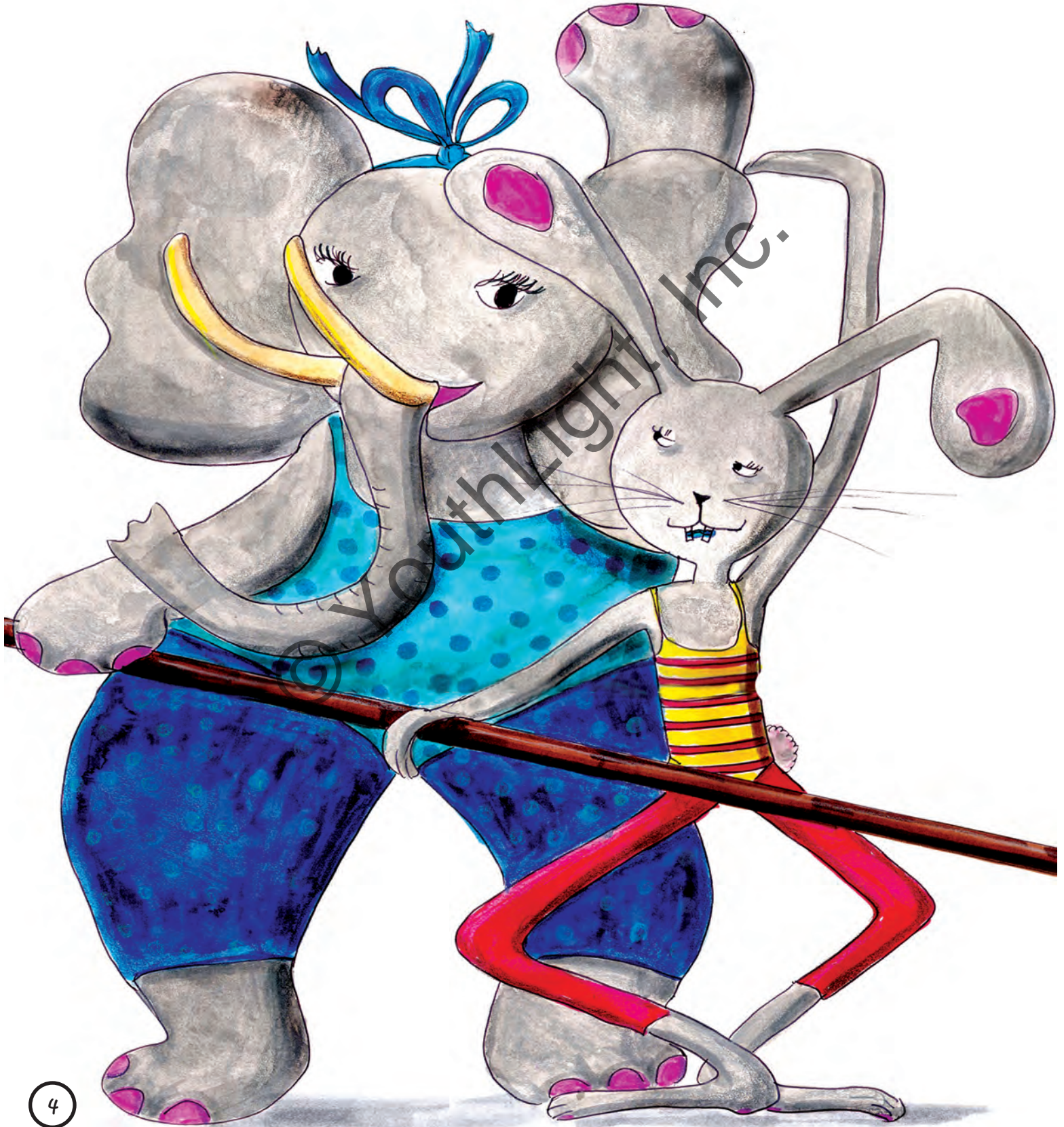




The dilemma began with a bunny
Abena was dainty and funny
A "slenderella" from birth
With no elephant girth
And a nose far too cute to be runny

After school they would go to ballet
There Abena was queen of the day
For Julia was umphy
Her pliés were galumphy
And her tusks always got in the way



One night as she sat at her mirror
The solution became much clearer
If she wished for some changing
Some slight rearranging
The wishing fairy would hear her

